

# OPPORTUNITIES AND CHALLENGES

PATTY HAYES, RN, MN  
PUBLIC HEALTH – SEATTLE & KING COUNTY  
DIRECTOR

Public Health   
Seattle & King County

Public Health  
Nursing  
Conference

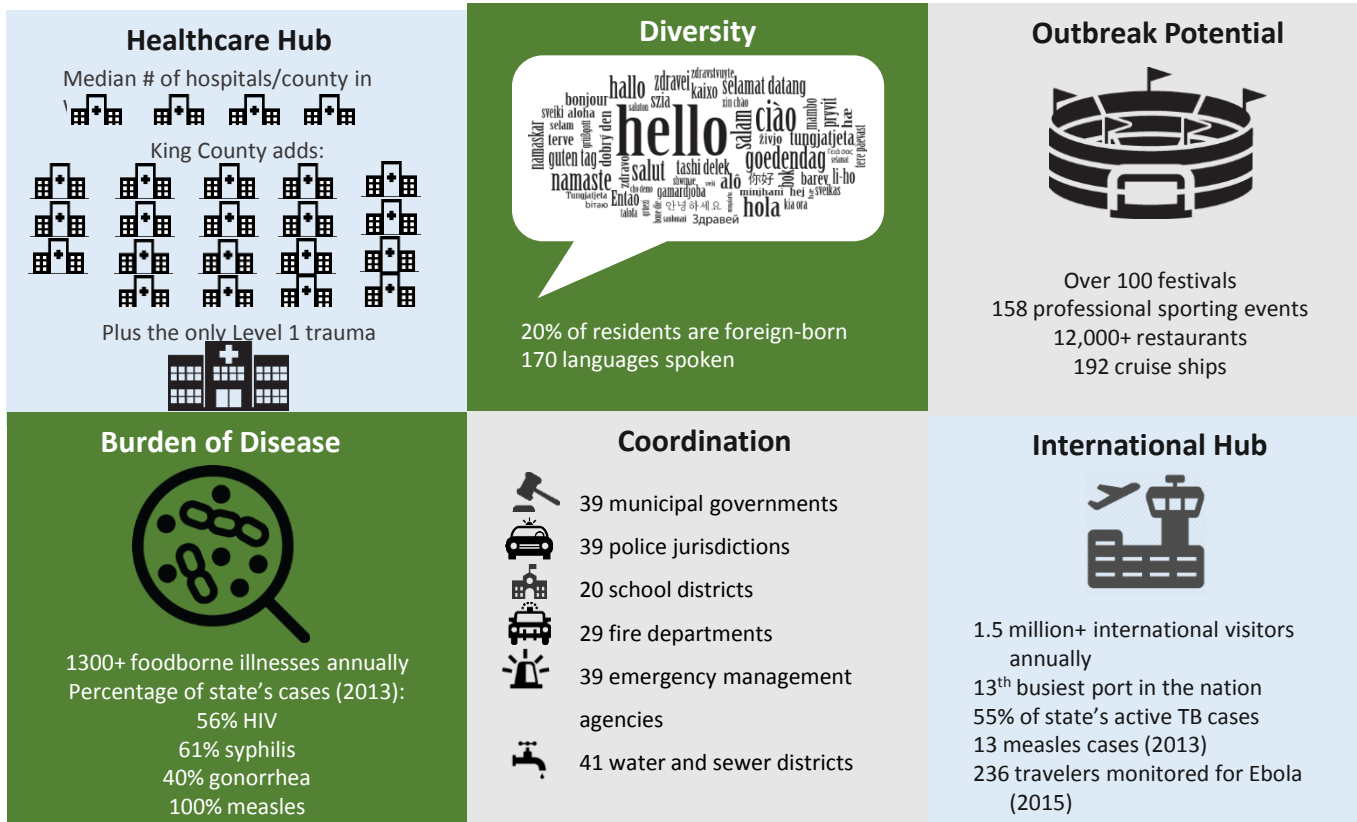
May 15, 2017

# OVERVIEW

- **Role of Metro Health Department**
- **ACA – AHCA**
- **Public Health’s evolving role**



## EXAMPLES OF VOLUME + COMPLEXITY IN A METRO HEALTH DEPARTMENT



**Metro health departments** provide the foundational public health services on a larger scale and more complex landscape. **What that requires:** greater breadth, more capacity for services that cut across programs.

# ELEMENTS OF THE ACA AT RISK UNDER AHCA

## **Prevention and Public Health Fund:**

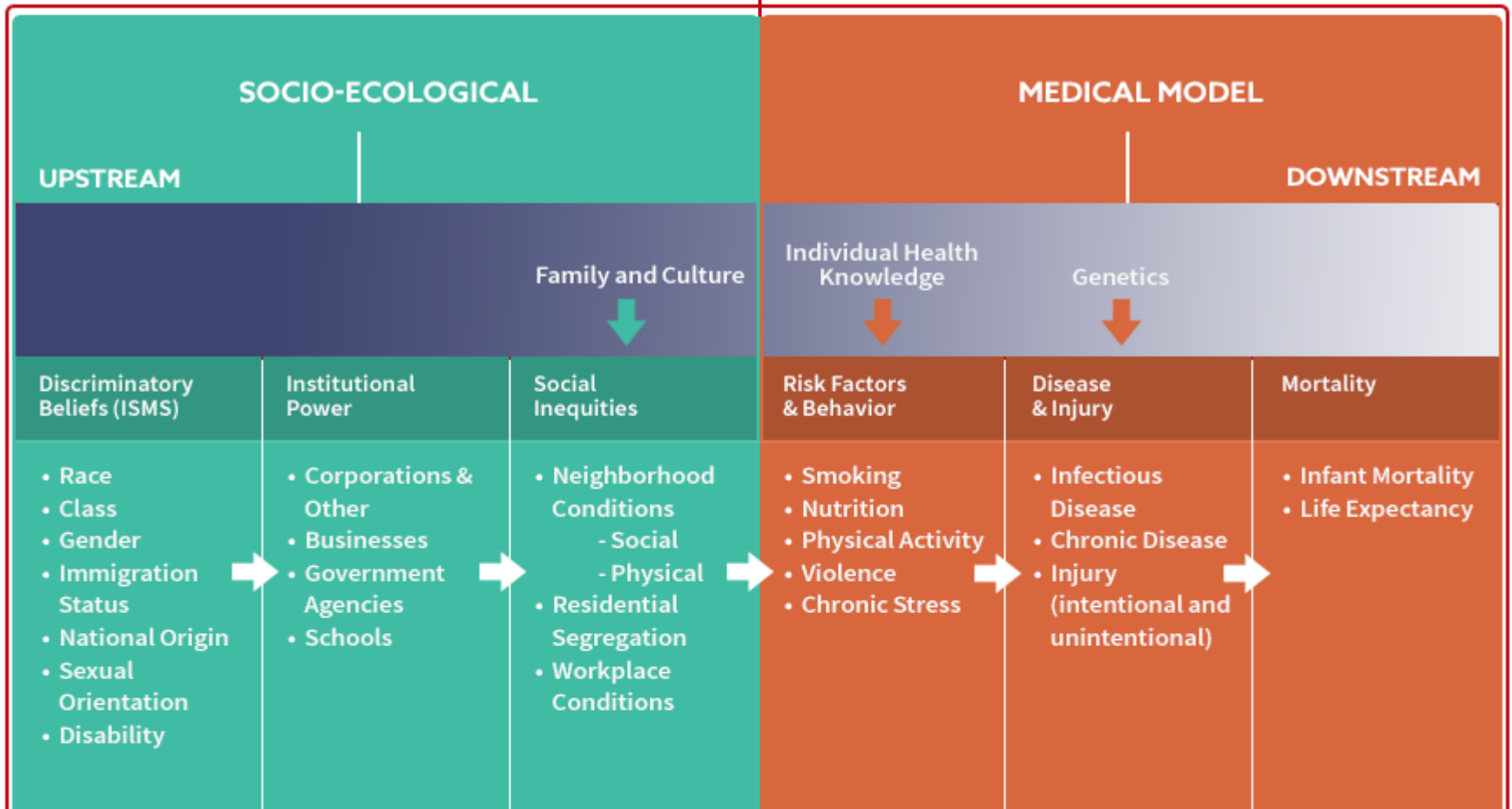
- **Community and clinical prevention initiatives;**
- **Research, surveillance and tracking;**
- **Public health infrastructure;**
- **Immunizations and screenings;**
- **Tobacco prevention; and**
- **Public health workforce and training.**

# ELEMENTS OF THE ACA AT RISK UNDER FEDERAL REPEAL AND REPLACE

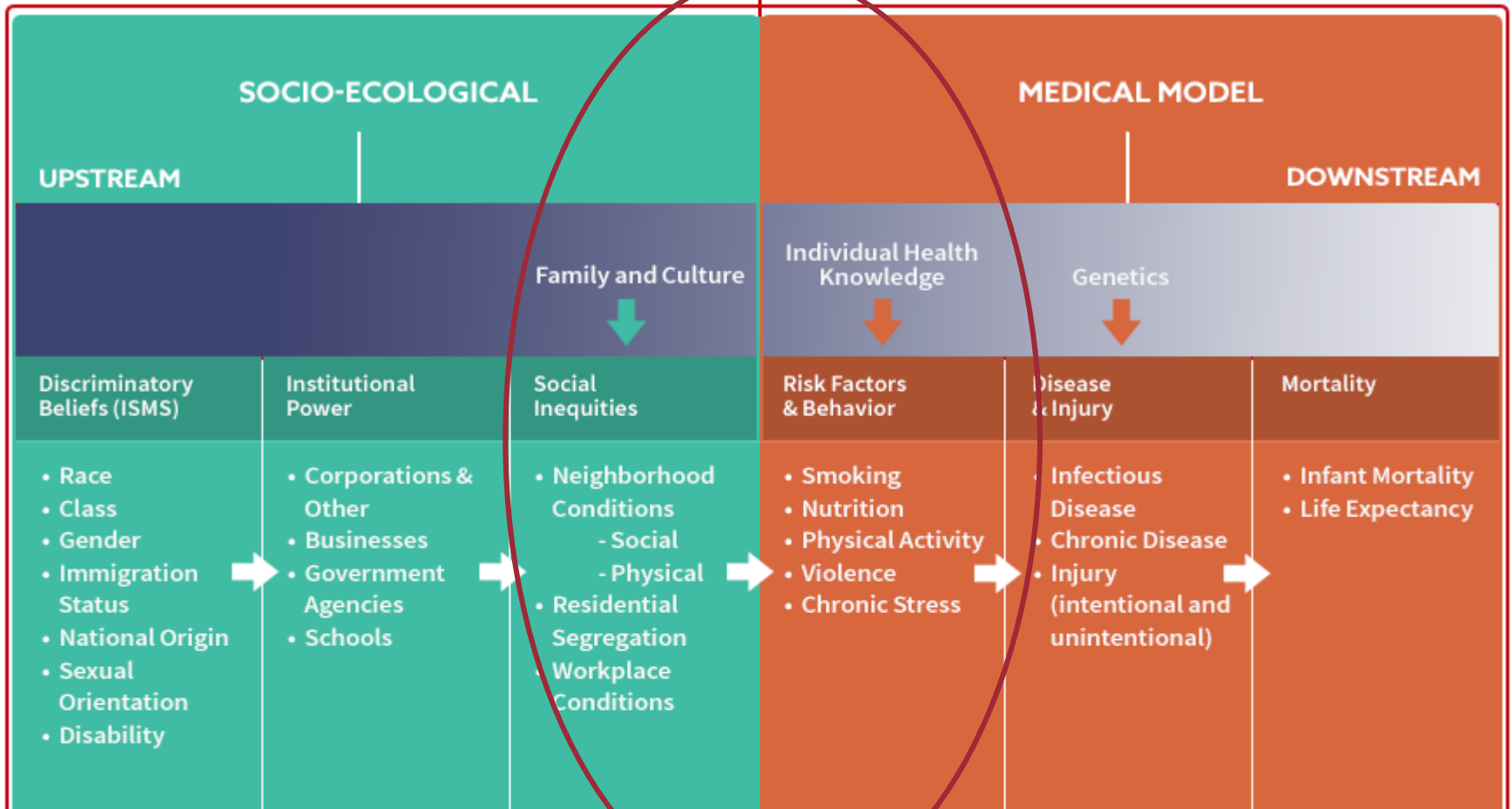
## 10 Essential Benefits

- Outpatient care
- Emergency services
- Hospitalization
- Pregnancy, maternity, and newborn care
- Mental health and substance use disorder services,
- Prescription drugs
- Rehabilitative and habilitative services
- Laboratory services
- Preventive and wellness services and chronic disease management
- Pediatric services

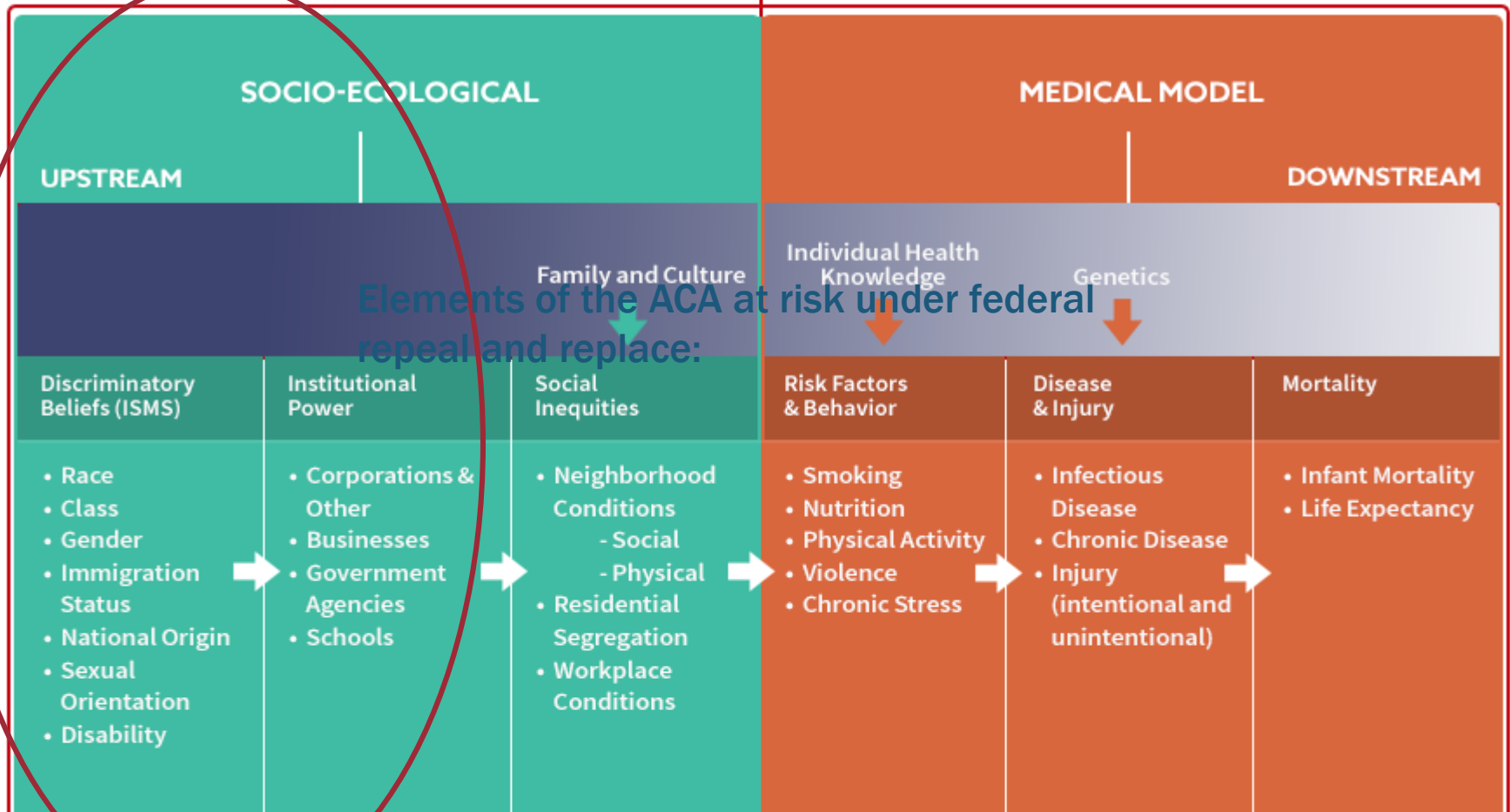
# A FRAMEWORK FOR HEALTH EQUALITY



# A FRAMEWORK FOR HEALTH EQUALITY



# A FRAMEWORK FOR HEALTH EQUALITY



Elements of the ACA at risk under federal repeal and replace:



# ADVANCED PRACTICE ROLES IN POPULATION HEALTH

Public health nursing practice sets nurses up well to excel in population health issues

- Individual care planning = Community
- Nurse training = Policy Development
- Assessment skills = Population



# LEADERSHIP OPPORTUNITIES IN NURSING

- **Working with Elected Officials to highlight needs and the impact of policy-making**
- **Creating nurse roles in the workplace for systems advocacy**
- **Participation in Boards, Commissions and elected officials at local, state and federal level**

# QUESTIONS?

**My question: How do you see  
your role?**